

# "High Frequency Ceramic Solutions"

## 2450 MHz Antenna

P/N 2450AT43B100

NEW with Ground Clearance Requirements Minimized

Detail Specification: 04/26/06

Page 1 of 4

### General Specifications

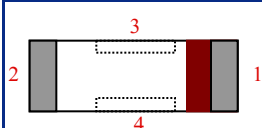
Part Number	2450AT43B100
Frequency Range	2400 - 2500 Mhz
Peak Gain	1 dBi typ. (XZ-V)
Average Gain	-0.5 dBi typ. (XZ-V)
Return Loss	9.5 dB min.

Input Power	3W max.
Impedance	50 $\Omega$
Operating Temperature	-40 to +85°C
Reel Quantity	1,000

P/N	Packaging Style	Bulk	Suffix = S	Eg. 2450AT43B100S
		T & R	Suffix = E	Eg. 2450AT43B100E
Suffix	Termination Style	100% Tin	Suffix = None	Eg. 2450AT43B100(E or S)
		Tin / Lead	Please consult Factory	

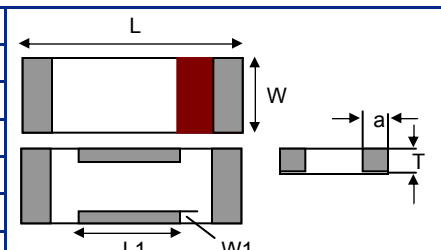
### Terminal Configuration

No.	Function
1	Feed Point
2	* Anchoring Pin
3	* Anchoring Pin
4	* Anchoring Pin



### Mechanical Dimensions

	In	mm
L	0.276 $\pm$ 0.008	7.00 $\pm$ 0.20
W	0.079 $\pm$ 0.008	2.00 $\pm$ 0.20
L1	0.102 $\pm$ 0.008	2.60 $\pm$ 0.20
W1	0.020 $\pm$ 0.008	0.50 $\pm$ 0.20
T	0.079 +.004/-0.008	2.00 +0.1/-0.2
a	0.020 $\pm$ 0.012	0.50 $\pm$ 0.30



Johanson Technology, Inc. reserves the right to make design changes without notice.  
All sales are subject to Johanson Technology, Inc. terms and conditions.



[www.johansontechology.com](http://www.johansontechology.com)

4001 Calle Tecate • Camarillo, CA 93012 • TEL 805.389.1166 FAX 805.389.1821

2003 Johanson Technology, Inc. All Rights Reserved

# "High Frequency Ceramic Solutions"

**2450 MHz Antenna**

**P/N 2450AT43B100**

Detail Specification: 04/26/06

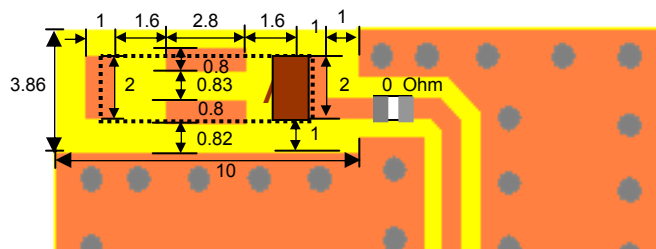
Page 2 of 4

## Mounting Considerations

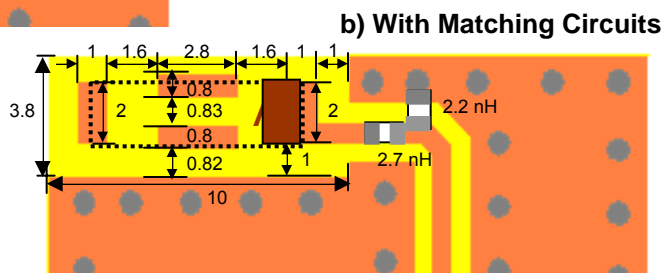
Mount these devices with brown mark facing up. Units: mm

Line width should be designed to provide 50Ω impedance matching characteristics.

\* Note: Pins 3 & 4, although "NC", must be soldered to its PCB pads for proper electrical operation



a) Without Matching Circuits



b) With Matching Circuits

JTI P/N for Matching Circuit:  
Inductor (2.2nH): L-07C2N2SV6T  
Inductor (2.7nH): L-07C2N7SV6T



# "High Frequency Ceramic Solutions"

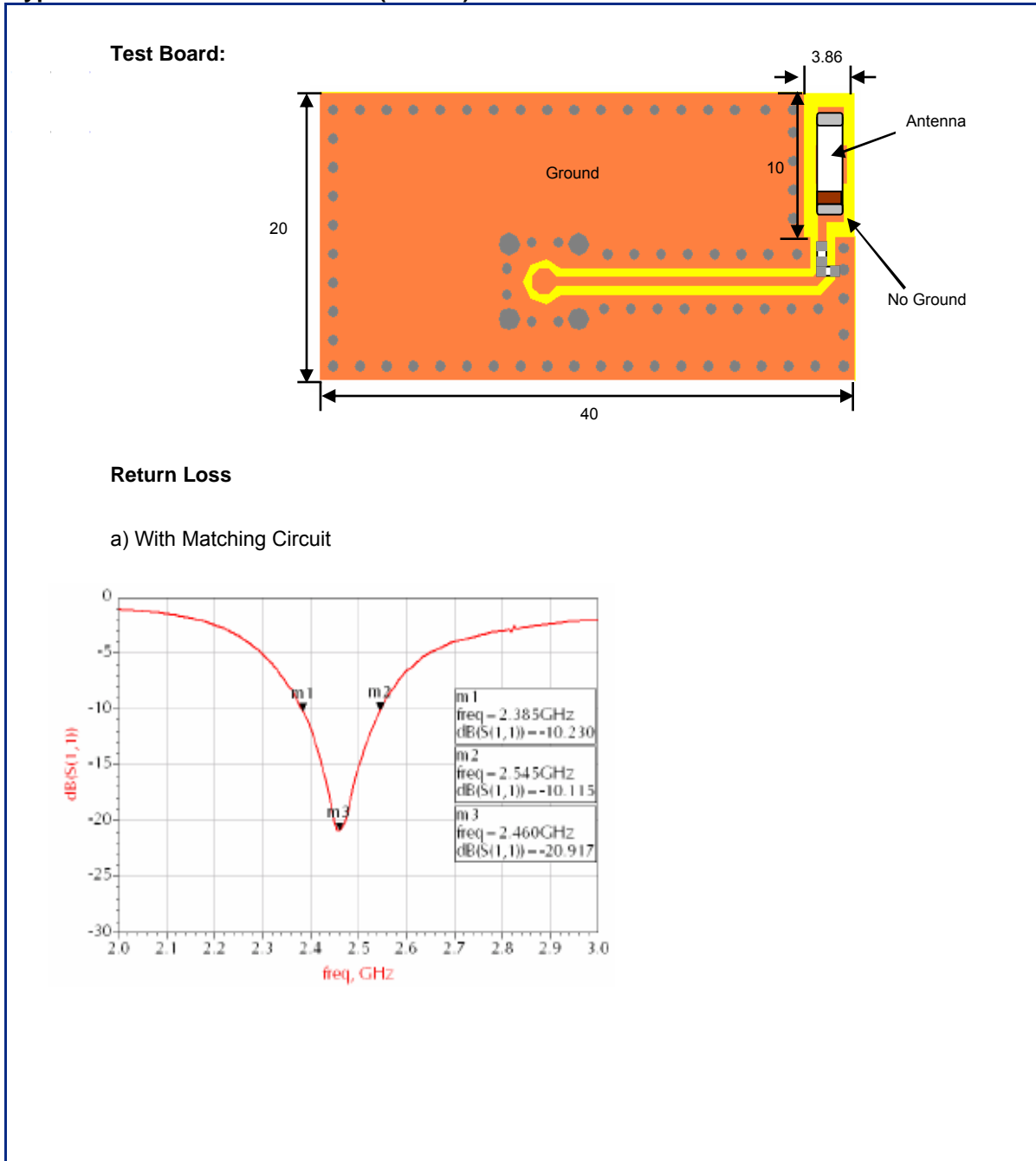
2450 MHz Antenna

P/N 2450AT43B100

Detail Specification: 04/26/06

Page 3 of 4

## Typical Electrical Characteristics (T=25°C)



Johanson Technology, Inc. reserves the right to make design changes without notice.

All sales are subject to Johanson Technology, Inc. terms and conditions.



[www.johansontechnology.com](http://www.johansontechnology.com)

4001 Calle Tecate • Camarillo, CA 93012 • TEL 805.389.1166 FAX 805.389.1821

2003 Johanson Technology, Inc. All Rights Reserved

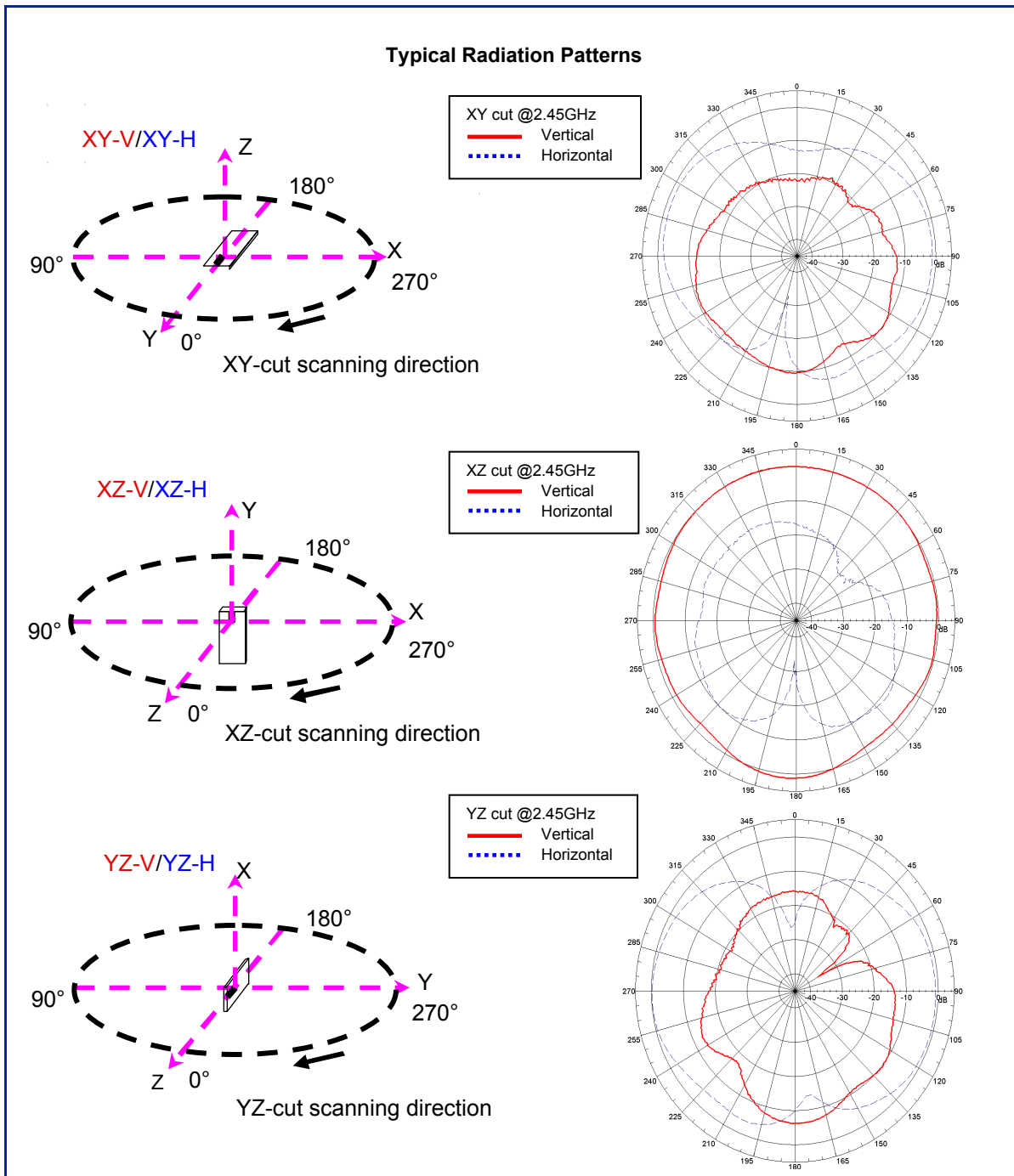
# "High Frequency Ceramic Solutions"

**2450 MHz Antenna**

**P/N 2450AT43B100**

Detail Specification: 04/26/06

Page 4 of 4



Johanson Technology, Inc. reserves the right to make design changes without notice.

All sales are subject to Johanson Technology, Inc. terms and conditions.



[www.johansontechnology.com](http://www.johansontechnology.com)  
 4001 Calle Tecate • Camarillo, CA 93012 • TEL 805.389.1166 FAX 805.389.1821

2003 Johanson Technology, Inc. All Rights Reserved